

## FITC Anti-Human CD41 Antibody[HIP8]

**Catalog Number:** E-AB-F1088C

**Note:** Centrifuge before opening to ensure complete recovery of vial contents.

### Description

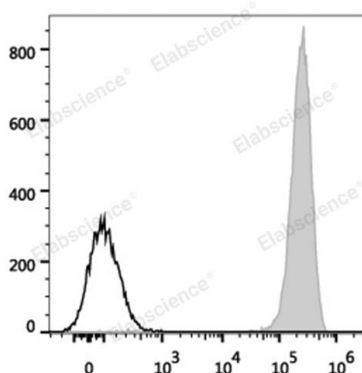
<b>Reactivity</b>	Human
<b>Host</b>	Mouse
<b>Isotype</b>	Mouse IgG1, κ
<b>Clone No.</b>	HIP8
<b>Isotype Control</b>	FITC Mouse IgG1, κ Isotype Control[MOPC-21] [Product E-AB-F09792C]
<b>Conjugation</b>	FITC
<b>Conjugation Information</b>	FITC is designed to be excited by the Blue laser (488 nm) and detected using an optical filter centered near 530 nm (e.g., a 525/40 nm bandpass filter).
<b>Storage Buffer</b>	Phosphate buffered solution, pH 7.2, containing 0.09% stabilizer and 1% protein protectant.

### Applications

### Recommended usage

<b>FCM</b>	Each lot of this antibody is quality control tested by flow cytometric analysis. <b>The amount of the reagent is suggested to be used 5 μL of antibody per test (million cells in 100 μL staining volume or per 100 μL of whole blood).</b> Please check your vial before the experiment. Since applications vary, the appropriate dilutions must be determined for individual use.
------------	---

### Data



Human ErythroLeukemia cell line HEL are stained with FITC Anti-Human CD41 Antibody (filled gray histogram). Unstained Human ErythroLeukemia cell line HEL (empty black histogram) are used as control.

### Preparation & Storage

<b>Storage</b>	Keep as concentrated solution. This product can be stored at 2-8°C for 12 months. Please protected from prolonged exposure to light and do not freeze. This product is guaranteed up to one year from purchase.
<b>Shipping</b>	Ice bag

### Antigen Information

<b>Alternate Names</b>	ITGAB;CD41;GP2B;GPIIb;GPalpha lib;ITGA2B;Integrin alpha-lib;Platelet membrane glycoprotein lib
------------------------	--

### For Research Use Only

**Uniprot ID**

P08514

**Gene ID**

3674

**Background**

CD41 is a 125/25 kD  $\alpha$  subunit of the gpIIb/IIIa (CD41/CD61) complex. CD41 is a heterodimer composed of a heavy chain (gpIIb $\alpha$ ) and light chain (gpIIb $\beta$ ) linked by a single disulfide bond. It is a member of the integrin family primarily expressed on platelets and megakaryocytes. CD41 has been reported to be involved with platelet aggregation and platelet attachment to the ECM. CD41/CD61 complex acts as the receptor for fibrinogen, fibronectin, Von Willebrand factor and thrombin.

**For Research Use Only**